



---

# Powering the Future through **People, Process & Product**

Corporate Brochure





**“Committed to providing high-quality transformer and control panel solutions that power industries and enhance energy efficiency across diverse applications since 1970”**



# Who We Are

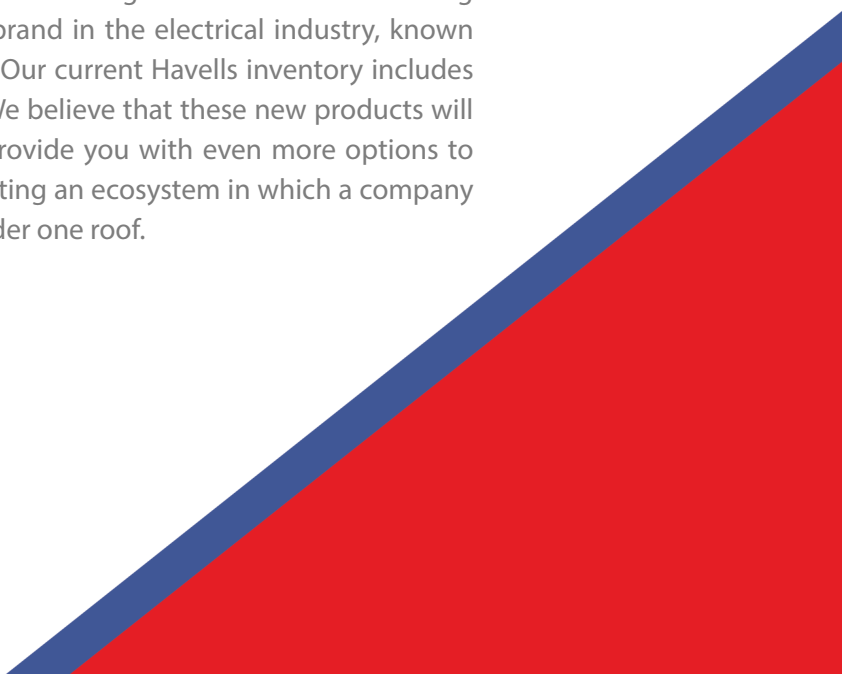
Welcome to Anand Steemet India private limited. We specialize in manufacturing wide range of transformers and customized electrical control panels designed to meet the energy needs of various sectors. Our dedication to quality, innovation & sustainability sets us apart in the energy solutions market.

We have been in business of producing transformers and panels on a massive scale, making us one of India's top manufacturing companies. Our well-equipped manufacturing facility, located in Industrial Area, Patna produces transformers of various capacities and grades in addition to highly sufficient distribution transformers.

We have continuously improved its manufacturing process over the last few years to guarantee the highest quality high standard products. The BIS certificate is already in our possession. Both the central and provisional governments have already tested our transformers, and official labs have also tested. International standards like IS: 2026, IS: 1180, IEC 171, ASA C57 and other pertinent IS & IE are met by our transformers and panels.

We are aiming to expand our market presence and establish ourselves as the leading manufacturers of HT panels in Bihar. We believe that this expansion will not only benefit our company but also contribute to the growth and development of the region. We are committed to delivering high-quality products and services to our customers.

We have recently expanded our product offerings and are now distributing Havells products. Havells is a leading brand in the electrical industry, known for its high-quality electrical solutions. Our current Havells inventory includes cables, wires, lights, and switchgears. We believe that these new products will complement our existing range and provide you with even more options to meet your electrical needs. We are creating an ecosystem in which a company can find all their electrical solutions under one roof.



# We Are an Award Winning **Transformer Manufacturer!**

## Windings

Depending on the degree of mechanical and electrical strength, insulation is applied between layers. The purpose of axial and radial cooling ducts is to reduce the temperature differences between the oil and windings, which in turn lowers the hot spot temperature. By doing this, a prolonged lifespan is attained and the rate of insulation degradation is reduced.

## Core Building

We use premium Cold Rolled Grain Orientated Magnetic Silicon Steel (CRGO) to guarantee the transformers operate as efficiently and with the fewest losses possible. Steel is selected as the magnetic material type based on the intended loss level. To guarantee optimal magnetic flux flow and a minimum air gap between the joints of two successive sheets, the laminations are cut geometrically.

## Core & Assembly Process



Anand Steemet India Private Limited uses kraft paper and high electrical quality pressboard in accordance with IS:1576. Regular checks are made to ensure that the insulating paper has a high dielectric strength. Additionally, permali wood is used for mechanical strength in the top and bottom.

## Construction of Tank



All of the tanks are made from premium, tested mild steel. The design ensures that it can withstand the accumulation of pressure within it.



# Senior Management



## Managing Director

At Anand Steemet, our mission is to power the world with innovative, reliable, and high-performance electrical solutions. As a leading manufacturer of transformers and control panels, we understand the critical role our products play in ensuring the smooth operation of industries across the globe. Our commitment to precision engineering, quality craftsmanship, and customer satisfaction drives everything we do.

**Prabhat Kumar**



## Vice President

I am proud to lead a team committed to delivering high-quality transformers and control panels. By combining cutting-edge technology with a deep understanding of client needs, we provide customized solutions that enhance efficiency. We stay ahead of industry trends and adhere to global standards to empower your operations.

**Ram Ravi**



## Chief Financial Officer

As the Chief Financial Officer, my priority is to ensure that our financial strategies are aligned with our vision for long-term success, enabling us to invest in cutting-edge technology and deliver value-driven solutions to our clients. By maintaining a strong financial foundation, we are able to consistently offer high-quality products while fostering sustainability and growth.

**Rohan Kumar**



## Chief Operating Officer

As the Chief Operating Officer, I take great pride in being part of a team that continuously strives to push the limits of excellence in transformer and control panel manufacturing. Our goal is not only to meet but exceed the expectations of our clients by delivering products that are safe, efficient, and future-ready. We are committed to fostering long-lasting partnerships by offering customized solutions that align with your unique requirements.

**Aniket Kumar**



## General Manager

As General Manager, it's a privilege to lead a team dedicated to delivering exceptional quality and precision. By leveraging advanced technology and understanding our clients' needs, we achieve outstanding results through continuous testing and a strong commitment to excellence.

**Bhaskar Prasad**



## Chief Engineer (Electrical Control Panel)

At Anand Steemet, we prioritize engineering excellence to deliver high-quality solutions. Through rigorous testing and continuous innovation, we ensure top-notch products that meet industry demands, all while focusing on customer satisfaction and reliability.

**Prabhat Kumar Sharma**



## Chief Engineer (Transformers)

At Anand Steemet, we are driven by a passion for excellence. Continuously evolving, we set new industry standards with a focus on innovation and precision. Our commitment ensures efficient, future-ready solutions that consistently exceed expectations.

**Anuj Patel**

# Milestones at a Glance



**2006** – Acquired the factory and established a transformer manufacturing unit. Began supplying transformers to major telecom companies, including Jio, Vodafone, Airtel, Idea, and Tata Docomo.



**2009** – Undertook telecom upgradation projects across Bihar using in-house manufactured transformers.



**2010** – Setting up the fabrication unit to diversify operations.



**2012** – Completed fabrication work for Bihar government projects, including Bhabua Jail and Chandi Engineering College.



**2016** – Delivered fabrication projects for GE T&D and Alstom Ltd.



**2021** – Fabricated units for Reliance Jio's mobile switch centre, the largest such facility in Bihar.



**2022** – Provided fabrication work for Reliance Jio BP at Barauni Oil Refinery, completing all required units.



**2023** – Started manufacturing electrical control panels and built a strong customer base in Patna and began expanding into other cities.



**2025** – Started Havells distributorship.

# CSR

## Our Commitment to CSR: A Journey of Impact & Responsibility

At Anand Steemet, our Corporate Social Responsibility (CSR) journey is driven by a commitment to sustainability and community empowerment. Recognizing our role in protecting the environment, we've embraced eco-friendly manufacturing practices, reduced our carbon footprint, and integrated renewable energy across our operations. Through these efforts, we aim to minimize our environmental impact and contribute to a greener, more sustainable future.

Beyond our environmental focus, we are deeply committed to uplifting the communities where we operate. By supporting education, skill development, and infrastructure improvement, we aim to create long-lasting opportunities for local individuals and families. These initiatives reflect our belief in fostering inclusive growth and contributing to a better quality of life for all.

Our vision is to lead by example, combining responsible business practices with meaningful social impact. At Anand Steemet, we believe that true success lies in shared progress, where environmental care and community development go hand in hand, shaping a future where both people and the planet can thrive.



# What We Offer

## Transformers

Anand Steemet India Private Limited manufactures transformers, customizable to client needs. Distribution transformers step down voltage from distribution lines, enabling AC power distribution since 1882. Typically rated under 200 kVA, we prioritize efficiency by minimizing iron losses during continuous operation and ensuring minimal voltage regulation at lower loads.

Anand Steemet India Private Limited manufactures standard transformers with ratings of 25 kVA, 63 kVA, 100 kVA upto 2500 KVA Voltage class 11 KV to 33 KV.





## Electrical Control Panels

A control panel is a flat or enclosed unit displaying control or monitoring instruments, accessible to users, like in security systems. It is commonly used in factories to manage machines or production lines, as well as in places like nuclear plants, ships, aircrafts, and mainframe computers. Older panels feature push buttons and analog instruments, while modern ones often use touchscreens for monitoring and control.

# Products

## Types of Transformers

### Distribution Transformers

We manufacture BIS certified energy efficient transformers as per IS-1180 Level-1, Level-2 & Level-3 with aluminium and copper wound. The transformers are designed for indoor and outdoor applications.

IS : 1180



CM/L - 5300054286

BIS

ISI MARKED TRANSFORMER

### Features:

- **Phase:** 3-phase
- **Frequency:** 50 Hz
- **Type:** Oil-immersed, conventional bolted cover
- **Range:** Up to 2500 kVA, upto 33 kV class, ONAN cooled
- **Mounting Options:** Pole/platform-mounted or trolley-mounted
- **Core Type:** Double wound with copper conductor
- **Taps:** Continuous taps on HT side with  $\pm 5\%$  to  $\pm 10\%$  HT variation
- **Connections:** Delta/star per vector group reference Dyn11

### Pole-Mounted Transformers

Mounted on four pillars, designed for ratings up to 315 kVA.

### Trolley-Mounted Transformers

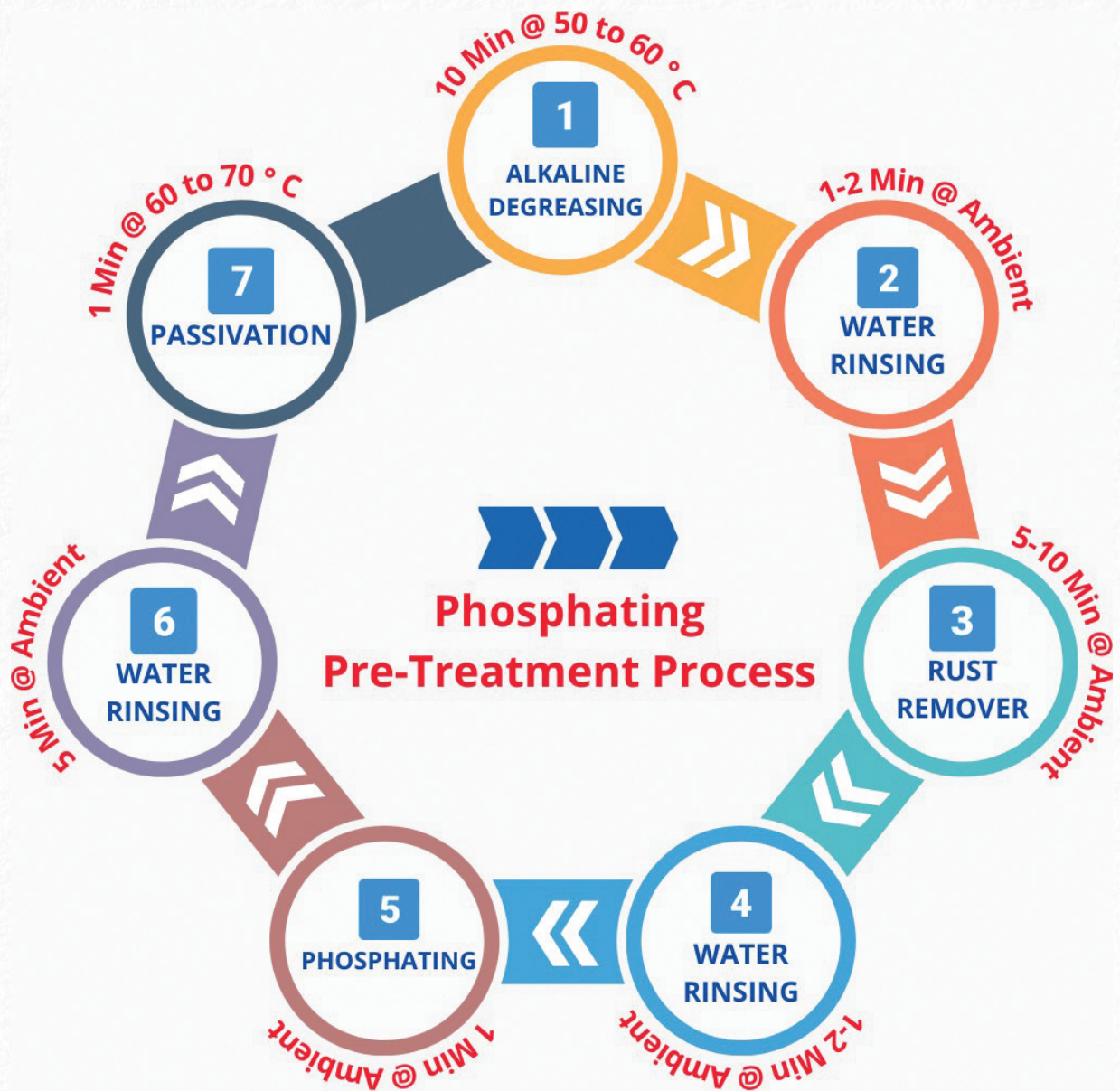
Fitted with wheels for easy mobility, ideal for ratings up to 2500 kVA.

## Benefits of Powder Coated Metal Enclosures for Steel Fabrication

- Durability
- Economy
- Diverse Range
- Uniformity
- Colour Variety
- Corrosion Resistance
- Appearance
- Custom Colour Matching
- Consumer Recognition



# 7-Tank Chemical Process



# Types of Electrical Control Panels

- Air Circuit Breaker Panel
  - Motor Control Center Panel
  - Power Control Center Panel
  - L.T. Bus Duct/Sandwich Bus Duct
  - Control and Relay Panel
  - Lighting Distribution Panel
  - RTCC Panel
  - Automatiom Panel
  - PLC Panel
  - VFD Panel
  - Synchronizing Panel
  - APFC Panel
  - RTPFC Panel
  - Active Harmonic Filter
- 



# SMDB Boxes – Precision in Power Distribution

Our **Service Main Distribution Boards (SMDBs)**, offered in both **single-phase** and **three-phase** variants, are designed for efficient, safe, and flexible power distribution. Built to serve residential, commercial, and light industrial environments, these boards provide the critical link between main distribution and end-user circuits.

Each unit features a compact, robust enclosure with integrated protective components like MCBs, MCCBs, and ELCBs, ensuring smooth operation and fault isolation. Whether it's a single-phase system for a small villa or a three-phase board for a commercial block, our SMDBs are engineered for performance, scalability, and ease of maintenance.

Fully compliant with international electrical standards, these boards support future upgrades while maintaining minimal installation footprint. When reliability and safety are non-negotiable, our SMDBs offer the control and consistency your infrastructure deserves.

In addition to their technical reliability, our SMDBs are customizable to meet specific project requirements. Clients can choose from a variety of enclosure sizes, mounting options, and internal configurations, allowing seamless integration with existing electrical systems. From cable management to labelling and metering, every detail is designed to ensure clarity, safety, and ease of access for technicians and maintenance personnel.

Our manufacturing process follows stringent quality control protocols, with each board undergoing rigorous testing before dispatch. We use high-grade materials and components sourced from trusted brands, ensuring long-term durability and consistent performance in even the most demanding environments. With professional installation support and after-sales service, our SMDBs are a dependable choice for any infrastructure seeking structured, future-ready power distribution.



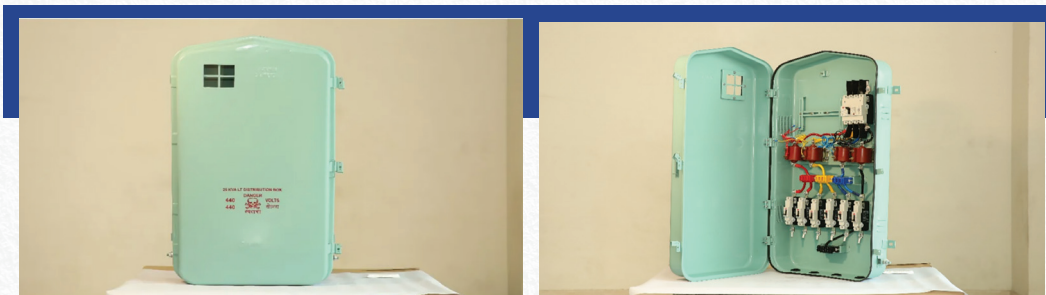
# LTDB Boxes – Power Distribution from 25 kVA to 1000 kVA

Our Low Tension Distribution Boards (LTDBs) are designed for safe, efficient, and reliable power distribution across industrial and commercial applications. Supporting transformer capacities from 25 kVA to 400 kVA, they are ideal for both expanding facilities and established networks.

Built with high-quality copper or aluminium busbars, advanced protection systems, and optional digital metering, each LTDB ensures robust performance. Housed in durable, IP-rated enclosures, they are suitable for both indoor and outdoor use, with layouts tailored to site needs.

Our LTDBs can be integrated with intelligent controls like PLCs, SCADA, and energy monitoring, enabling real-time tracking, fault diagnostics, and predictive maintenance. Optional ATS and generator sync features support backup power requirements.

Tested to IEC and IS standards, and backed by complete technical support, our LTDBs deliver scalable, smart, and dependable power solutions for the future.



# Types of Products

At Anand Steemet, we offer a diverse range of high-quality control panels designed to meet the specific needs of various industries. Our control panels are engineered with precision to provide seamless operation, safety, and efficiency. From metering panels to servo bypass panels, each product is crafted using the latest technology and superior materials to ensure optimal performance and reliability.



A.C. Drive Panels (VFD)



PLC Based Panels



Motor Control Center (MCC)



Power Control Center (PCC)



Auto Mains Failure (AMF)



Auto Power Factor Correction (APFC)



Relay Control Panels



Auto Transfer Switch (ATS)



Distribution Boards (DB)



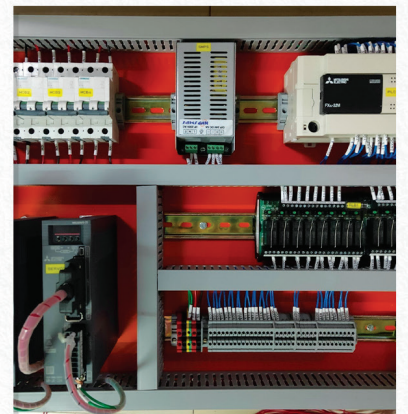
Auto Synchronization Panels



DG Load Management Panels



Fire Fighting Panels



Servo Based Motion Control Panels



Enclosures, SMPS, Switchgears & Sensors

# Diverse Applications

Our control panels are designed for industrial and commercial applications, where power distribution and management are crucial. With customizable configurations, we ensure that each control panel meets the unique specifications of our clients, providing them with tailored solutions for enhanced operational control and protection. Whether for electrical systems, automation, or power management, our control panels are engineered to deliver consistent and dependable performance.



WTP & STP



Paper & Power Industries



Pharma Industries



Food Industries



Bottlings



Oxygen



HVAC



Pump & Fan



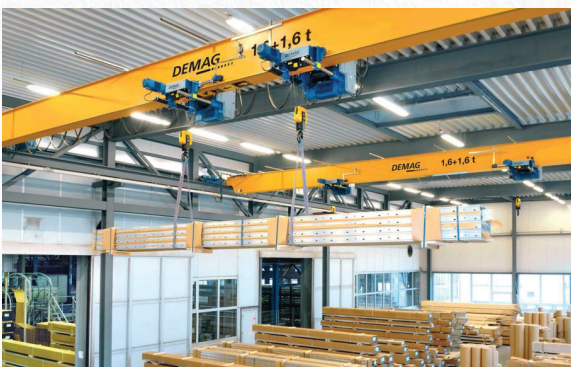
DG Load Management



Elevators



Hydraulic Power Press



Hoist & Crane Synchronization



Wagon Tippler

# Certifications & Awards

We offer an extensive range of innovative products designed to cater to the diverse needs of our customers. Each item can be fully customized and personalized, allowing us to deliver solutions that are perfectly aligned with the unique requirements and preferences of our clients. Whether it's specific features, sizes, or performance specifications, our team works closely with customers to ensure that every product meets their exact expectations. By combining advanced technology with customer-focused flexibility, we strive to provide exceptional products that enhance satisfaction and offer long-term value.



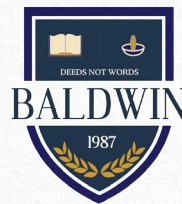
# Clients

At Anand Steemet, we specialize in delivering comprehensive electrification services, including the manufacturing of high-quality transformers, advanced control panels, and more. Our cutting-edge solutions are tailored to meet the diverse needs of industries, ensuring seamless power distribution and reliable performance.

With a focus on innovation, efficiency, and durability, we are committed to powering progress and enabling sustainable growth for our clients across various sectors.



**Gyan Niketan**  
Senior Secondary School



GE VERNOVA

**ALSTOM**



**NCC**  
NCC Limited



**PINAX™**



**NAVAYUGA**



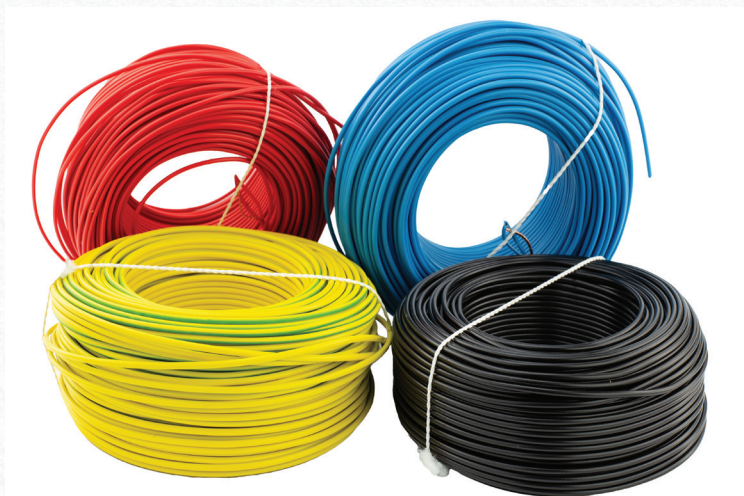
## Authorized Distributor of Havells Products

Anand Steemet takes pride in partnering with Havells, one of the leading brands in the electrical industry, to bring high-quality electrical solutions to our customers. With a commitment to excellence and reliability, we now offer a diverse range of Havells products, including wires, lights, cables, and switchgear. These products are designed to meet industry standards, ensuring safety, efficiency, and durability across various applications.



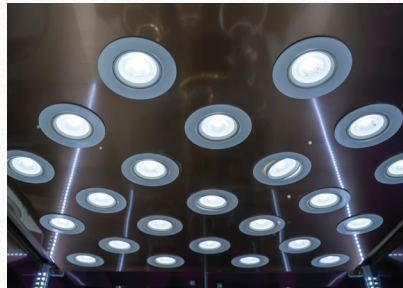
### Wires & Cables

Havells wires and cables are known for their superior conductivity, high insulation resistance, and fire-retardant properties. These products are designed to ensure efficient power transmission and are ideal for residential, commercial, and industrial use. They offer long-lasting performance and enhanced safety, reducing risks associated with electrical failures.



## Lights

The Havells lighting range includes energy-efficient LED solutions that provide superior illumination while minimizing power consumption. From decorative lighting for homes to high-performance industrial and commercial lighting, Havells products deliver optimal brightness and longevity. Their innovative designs and advanced technology ensure better energy savings and visual comfort.



## Switchgears

Havells switchgear solutions are designed to ensure the highest standards of safety, reliability, and control for electrical circuits across residential, commercial, and industrial applications. Engineered with advanced protection mechanisms, these switchgears help safeguard equipment and lives against overloads, short circuits, and other electrical faults. With a wide range of products including MCBs, RCCBs, isolators, and ACBs, Havells ensures consistent performance and long-term durability. The compact and modular designs make installation easy while meeting the latest global electrical safety standards.



# Our Landmark Projects



In 2016, Anand Steemet successfully delivered fabrication projects for GET&D, showcasing our expertise in high-quality manufacturing and precision engineering. This collaboration reinforced our commitment to excellence, meeting the stringent standards of the power transmission and distribution sector. Our dedication to innovation and quality has positioned us as a trusted partner in the industry.



In 2016, Anand Steemet successfully delivered fabrication projects for Alstom Ltd., demonstrating our commitment to precision engineering and superior quality. This achievement highlighted our expertise in meeting industry standards and reinforced our reputation as a reliable partner in the manufacturing sector.



In 2021, Anand Steemet successfully fabricated units for Reliance Jio's Mobile Switch Centre, the largest facility in Bihar. This project was a testament to our expertise in precision fabrication and our commitment to delivering high-quality solutions for large-scale infrastructure. By adhering to stringent industry standards and leveraging advanced technology, we ensured that every fabricated unit met the operational requirements of the facility. Our ability to execute complex projects efficiently highlights our dedication to innovation, reliability, and excellence in industrial fabrication.



In 2022, Anand Steemet completed the fabrication work for Reliance Jio BP at Barauni Oil Refinery, delivering all required units with the highest standards of precision and efficiency. This project showcased our industrial fabrication expertise and ability to meet the rigorous demands of the oil and gas sector. By utilizing advanced technology and adhering to stringent quality control measures, we ensured that every unit was built to withstand operational challenges while maintaining superior performance. This achievement further reinforced our commitment to excellence, reliability, and innovation in infrastructure development.



# Factory Details

## State-of-the-Art Manufacturing Hub at Patliputra

Our advanced manufacturing facility, located at C-18,19 Patliputra Industrial Area, Patna, Bihar - 800013, is strategically positioned to serve both local and national markets. This prime location allows for efficient management of logistics and supply chains, ensuring timely deliveries to customers across the country. Equipped with cutting-edge machinery, our facility supports the production of high-quality, precision-engineered products, meeting the most demanding industry standards.

Our futuristic facility is designed with the latest technology to ensure that every product meets the highest standards of performance and quality. The advanced machinery in use allows us to handle complex manufacturing processes, ensuring the precision and durability of every item we produce. This technical capability supports our mission to deliver products that not only meet but exceed customer expectations.





### Meeting Evolving Market

**Demands:** These advancements allow us to adapt swiftly to changing market needs, ensuring that our products remain relevant, innovative, and capable of fulfilling diverse customer requirements.



### Continuous Investment in Technology:

We prioritize regular investments in the latest technological advancements and equipment upgrades to ensure we stay ahead of industry trends and maintain our competitive edge in the market.



### Enhanced Efficiency and Timely Delivery:

By integrating cutting-edge technologies, we boost our manufacturing efficiency, reduce operational delays, and guarantee on-time delivery of our products without ever compromising on quality.



### Streamlined Manufacturing Processes:

Beyond machinery upgrades, we focus on refining and improving our production methods, ensuring smooth operations, reducing redundancies, and enhancing overall productivity.



### Commitment to Sustainability:

Our focus on reducing waste and optimizing resources aligns with our commitment to environmental responsibility, ensuring that we contribute positively to sustainability while meeting high-performance demands.



### Optimized Resource Utilization:

Through process improvements, we utilize resources more effectively, minimizing waste while maintaining high standards of quality, which helps us deliver superior products consistently.



### Delivering Reliable and Affordable Solutions:

We strive to provide dependable and cost-effective products that not only support the success and growth of our clients' businesses but also reinforce our reputation as a trusted industry leader.



# Partner With Us

Here's why you should choose to partner with us:

## Certified Excellence

BIS-certified transformers are precisely tested by Provincial and Central Government authorities and leading government laboratories.

## Compliance with Global Standards

All our products conform to international standards such as IS:2026, IS:1180, IEC 171, ASA C57, and other relevant IS and IEC standards.

## Proven Track Record

We have maintained a track record of delivering quality products for the past five decades.

Anand Steemet India Private Limited,  
your one-stop solution where  
**quality meets trust.**

## Reach us



Anand Steemet India Private Limited  
C-18,19 Patliputra Industrial Area,  
Patna, Bihar - 800013



+91-81020 34390

+91-99340 10482



[asipl@reconorg.com](mailto:asipl@reconorg.com)



[www.asipl.org](http://www.asipl.org)



Follow us: [!\[\]\(e51810ff30b37de53380ac76c06eed8d\_img.jpg\)](#) [!\[\]\(91f1bb7292c8cc58f14491bccea28702\_img.jpg\)](#) [!\[\]\(38d8e39920b091af7506b9a91a3d21a2\_img.jpg\)](#) [!\[\]\(0faea09d8a3d820df69ec80b214a4c1a\_img.jpg\)](#) [!\[\]\(38d337e4ce52474576f162e1ad9c21c1\_img.jpg\)](#)